

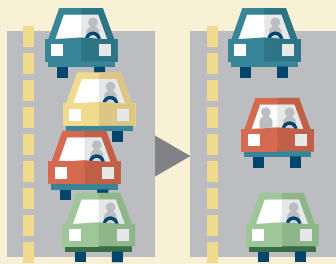
RENEWABLE ENERGY PROGRAM

Clean energy with local benefits

WHEN YOU HELP PROTECT THE PLANET, YOU ALSO HELP YOUR COMMUNITY.

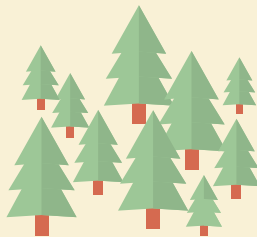
When purchasing renewable energy you are doing your part to make the environment cleaner while leaving the world a greener place for the next generation. And, you get the added benefit of knowing you are making an investment in our community by helping to control energy costs now and in the future. The best part? You can do all of that for just an extra \$3 a month.

WHAT ARE THE BENEFITS? Buying two blocks of renewable energy per month for a year equals:



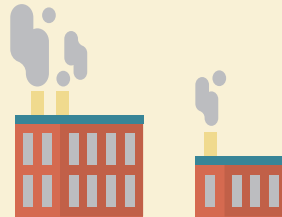
REMOVING ONE CAR FROM THE ROAD

OR



PLANTING 1.2 ACRES OF TREES

OR



PREVENTING OVER 5 TONS OF CO2 EMISSIONS

OR



ELIMINATING THE BURNING OF 3 TONS OF COAL

HOW MUCH DOES IT COST?

Just \$3 per block of renewable energy. About as much as:
GALLON OF MILK · CUP OF COFFEE · MAGAZINE



EACH \$3 BLOCK OF RENEWABLE ENERGY

you buy is added to your monthly electric bill and ensures 300 kilowatt-hours (kWh) of electricity is generated by renewable resources such as wind, solar and biogas.



=



IT'S CLEAN.

The more renewable energy we use, the less coal, oil and natural gas we'll burn.

IT'S SUSTAINABLE.

Wind, biogas and solar will never run out – something that's simply not true of conventional resources.

IT'S SMART.

Renewable energy efficiently uses valuable resources and prevents waste.



At Algoma Utilities, we believe affordable public power strengthens our community and helps our neighbors. That's why, through WPPI Energy, we're partnering with other local not-for-profit utilities to share resources and lower costs.

www.algomautilities.com • (920) 487-5556



The Green-e Energy logo helps consumers easily identify environmentally superior renewable energy options. For more information on Green-e Energy certification requirements, call 1-888-63-GREEN or log on to www.green-e.org.

Joining is easy!

There is no special equipment to install, and no change in the way you receive or use energy. You can start (or stop) your participation at any time, and you can use as many blocks of green power as you like. Each one is the equivalent of 300 kilowatt-hours (kWh).

I AGREE TO PURCHASE

___ BLOCKS OF RENEWABLE ENERGY AT \$3.00 PER MONTH, FOR A TOTAL MONTHLY COMMITMENT OF \$ ___. THIS PURCHASE WILL APPEAR AS AN ADDITIONAL CHARGE ON OUR MONTHLY UTILITY BILL. WE UNDERSTAND THAT WE CAN CHANGE OUR PARTICIPATION LEVEL OR CANCEL AT ANY TIME.

NAME

Fold along dotted lines, tape and mail

EMAIL ADDRESS

ADDRESS

APT/SUITE #

CITY

STATE

ZIP

PHONE NUMBER

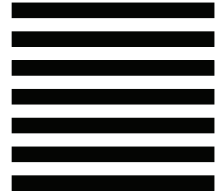


NO POSTAGE
NECESSARY
IF MAILED
IN THE
UNITED STATES

BUSINESS REPLY MAIL

FIRST-CLASS MAIL PERMIT NO. 636 SUN PRAIRIE WI

POSTAGE WILL BE PAID BY ADDRESSEE



RENEWABLE ENERGY PROGRAM
C/O
PO BOX 922
SUN PRAIRIE WI 53590-9906



PRODUCT CONTENT LABEL

The Renewable Energy Program is Green-e Energy certified to ensure customers get what they pay for. For more information on Green-e Energy certification requirements, visit www.green-e.org.

Wind energy is produced in Minnesota, Wisconsin and Iowa; energy from biogas and solar energy is produced in Wisconsin and Iowa. Actual figures may vary according to resource availability. For specific information about this renewable electricity product, visit www.wppienergy.org

Energy Sources	Renewable Energy Program 2015 Actual	Renewable Energy Program 2016 Projected	Current WPPI Energy Standard Supply
Renewable Energy	100%	100%	13.3%
Wind	61.1%	61.1%	
Biogas	33.3%	33.3%	
Solar	5.6%	5.6%	
Coal	0%	0%	48.7%
Nuclear	0%	0%	18.1%
Natural Gas	0%	0%	20.0%
Petroleum	0%	0%	0%
Total	100%	100%	100%